

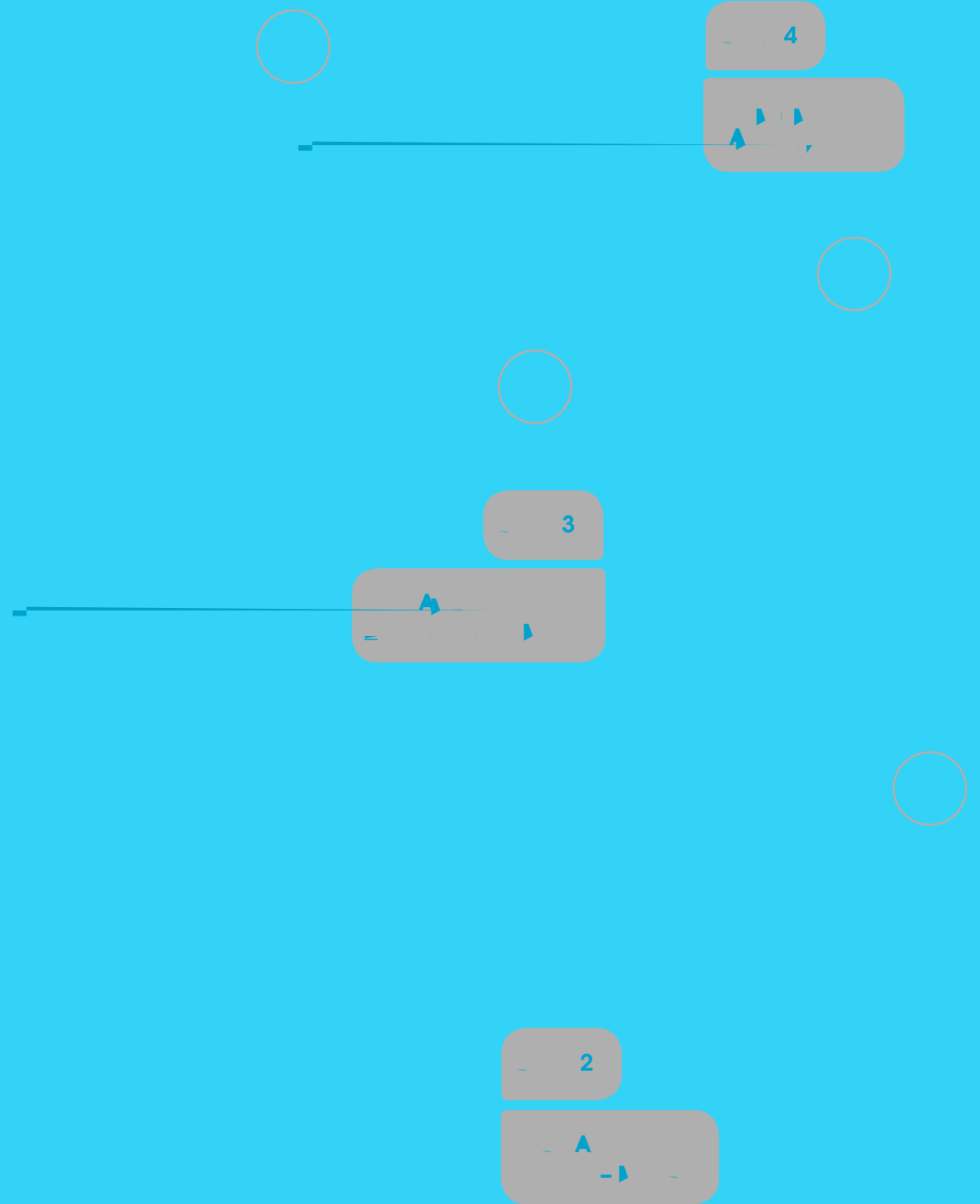
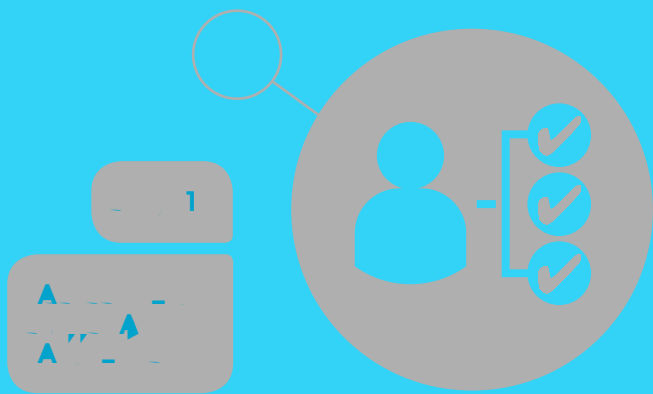
Th



## YOUR AMBITION













Policing has changed since the initial training programme was introduced. Police forces face complex problems with demands from digital investigation and vulnerable people. Serving officers have learned on the job and done training, but not received formal recognition for the level of expertise they have reached.

The new programmes will allow officers to get recognition for the complexity of their roles

It is hoped that the new entry routes will increase diversity in the Police force, as participation in higher education is rising amongst ethnic minority applicants, faster than their 'share' of the population, and students from disadvantaged backgrounds have increased their participation in higher education at a faster rate than those from more privileged backgrounds.

Applicants from black, Asian and minority ethnic (BAME) backgrounds who applied for the police apprenticeship in Derbyshire and Nottinghamshire made up 15 and 22 per cent of applicants. It is hoped this will increase BAME representation in the service which is currently at six per cent.

From the 1st of January 2020 there will be three ways to become a Police Constable: An Apprenticeship (PCDA), Degree holder entry (DHEP) or the option that we are offering: The Pre-Join Degree in Professional Policing.

The advantage of the Pre-Join Degree in Professional Policing is that it allows you to do your studies first before applying to a police force. This means you will not be a Police Officer from day one but that you will be able to fully dedicate yourself to your studies first rather than having to manage the workload and demands of being a police officer at the same time.

The Pre-Join degree will ensure that you have the relevant knowledge

€ 3 year degree

€ Funded by the applicant

€ Can work as a Special Police Constable whilst studying ... e.g. Leicestershire Police expect those on degree to apply to become a Special in the first year of degree and volunteer throughout the three years

€ Recruitment into the force will be by Application form, SEARCH Assessment centre, interview and Pre Employment checks

€ No guarantee you will pass the Police officer recruitment

€ The College of Policing determines the requirements post completion



Please note you can only apply to one force at a time, so you will need to check the website of the Police Force you want to join.

Don't forget to check the precise eligibility criteria with your chosen force before applying.

After you've sent in your application to be a police officer, a three-step process begins.











# LAYING THE FOUNDATIONS

During your degree there are many ways you can develop your skills to enhance your chances of joining the Police, but which will also be useful for many careers:

## JOINING THE SPECIALS

€ During your degree, it will be advisable to join the Special Police ... this will show your commitment to joining the Police, and also help you develop the skills and experience required. Many forces will expect this.

€ Special constables (or "Specials") are a type of police officer who work on a part-time basis. They are often used for a variety of tasks, including crowd control, public order, and general policing. They are usually recruited from the local community and are often seen in uniform. They are a valuable part of the police force and can be a great way to gain experience and develop your skills.

€ Independent Custody Visitors - these are members of the public who make regular unannounced visits to check on the standards in which people are held in custody. Visitors play a vital role in raising standards and helping ensure the fair treatment of detainees. Their visits also help to enhance the accountability and transparency of the police among the communities they serve. [icva.org.uk/](http://icva.org.uk/)

€ Pro Bono schemes at the University of Law may also appeal. These allow you to gain valuable experience and develop your skills as well as insight into the challenges being faced by the public.

## STUDENT SOCIETIES

The ability to influence peers is important whether engaging in society activities or running for positions of responsibility within them. Social relationships form which are akin to the development of a more professional network which will be so important as you progress your career. The handover requirements necessitate really important skills that are tested in the workplace and creating a new society shows enterprise and determination.



